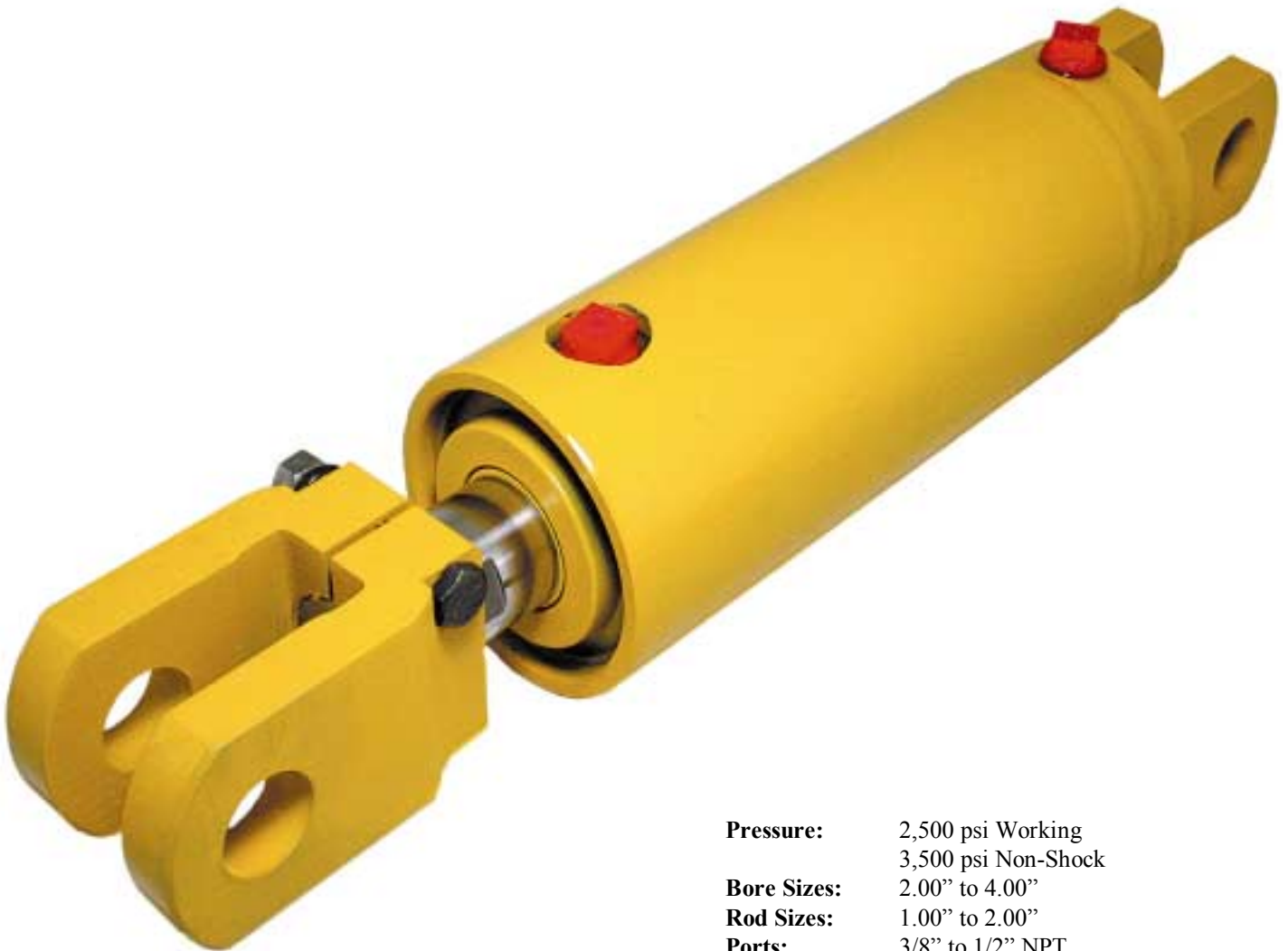




## Series S Hydraulic Cylinder Snap ring



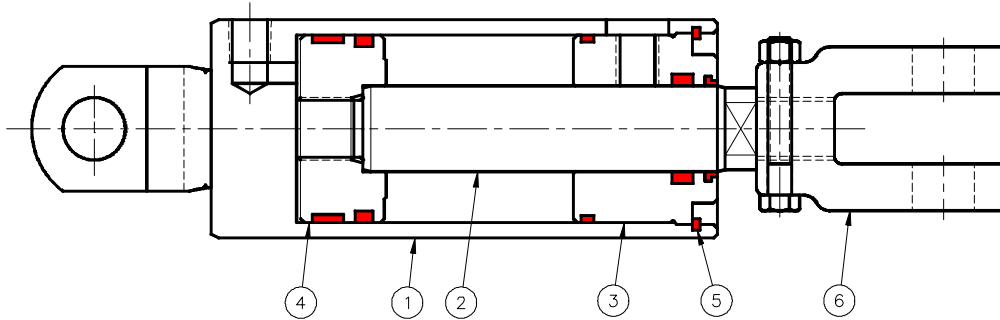
**Pressure:** 2,500 psi Working  
3,500 psi Non-Shock  
**Bore Sizes:** 2.00" to 4.00"  
**Rod Sizes:** 1.00" to 2.00"  
**Ports:** 3/8" to 1/2" NPT  
**Attachments:** Clevis

## Series S Cylinder

Our Series S cylinders are a snap ring style of cylinder, that is the head gland is held in place with a snap ring. They are rated for 2,500 psi operating pressure, and have a 3,500 non-shock pressure rating. This style is mainly used where space is limited around the cylinder, such as inside a structure.

### FEATURES:

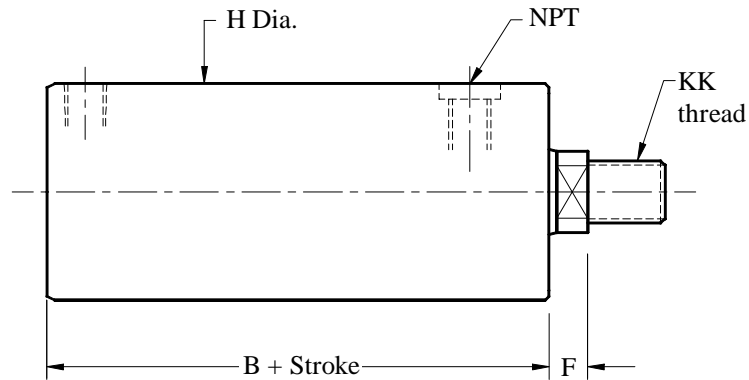
- There is no protrusion beyond the barrel outside diameter
- Head gland is held in place with a snap ring
- NPT ports are machined directly into the end and the head gland
- Piston is threaded to the rod with locking compound
- Clevis with 1" dia. pins are standard on both ends on all bore sizes



PART NUMBERS		Item 1	Item 2	Item 3	Item 4	Item 5	Item 6	
Bore	Rod	Barrel	Rod	Gland	Piston	Snap Ring	Rod Clevis	Seal Kit
2	1	Part number is Model number and Stroke Followed by: B for barrel R for rod		B2699	B2727-32	12206	B2796-2	12178
2 1/2	1			B2702	B2727-40	10799	B2796-2	12187
	1 3/8			B2703	B2727-40	10799	B2796-2	12180
3	1 3/8			B2680	B2727-48	10800	B2796-2	12174
	1 3/4			B2692	B2727-48	10800	B2796-2	12188
3 1/2	1 3/8			B2660	B2727-56	11588	B2796-2	12173
	1 3/4			B2693	B2727-56	11588	B2796-2	12189
4	1 3/4			B2683	B2727-64	10795	B2796-2	12190
	2			B2691	B2727-64	10795	B2796-2	12191
4 1/2	2			B3120	B3124	12766	B2796-2	12320
5	2			B2955	B2954	10797	B2796-2	12277

## Series S Cylinder

### Basic cylinder



Bore	Rod #1	Rod #2	B	F	H	KK	NPT
2	1	—	4.88	0.88	3.00	1-14	3/8
2 1/2	1	1 3/8	4.88	0.88	3.00	1-14	3/8
3	1 3/8	1 3/4	5.13	0.63	3.50	1-14	1/2
3 1/2	1 3/8	1 3/4	5.13	0.63	4.00	1-14	1/2
4	1 3/4	2	5.13	0.63	4.50	1-14	1/2
4 1/2	2	—	6.00	0.63	5.00	1-14	1/2
5	2	—	6.00	0.63	5.75	1-14	1/2

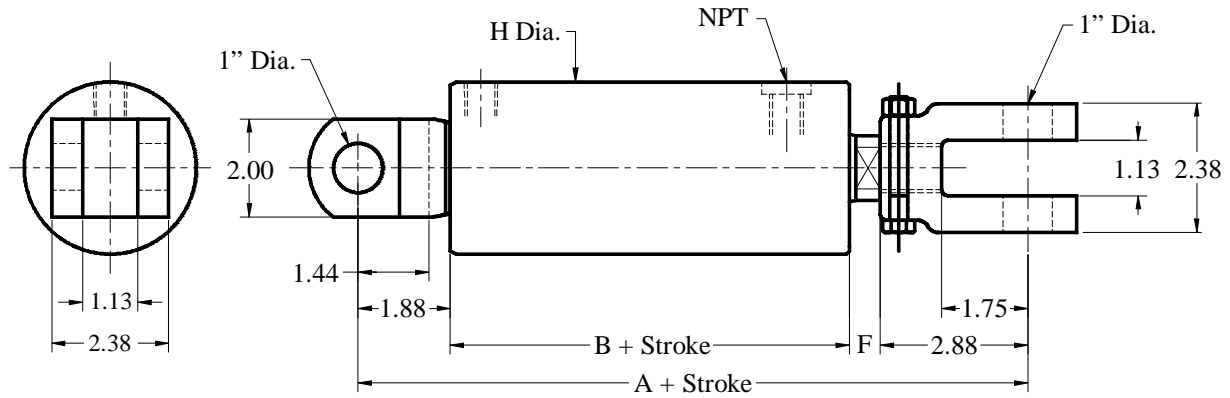
SHIPPING WEIGHTS (Approximate)					
Base Weight includes clevises.					
Bore	Base Weight	Pounds per inch of stroke by rod size			
		1	1 3/8	1 3/4	2
2	13	0.59			
2 1/2	13	0.72	0.91		
3	17		1.14	1.40	
3 1/2	21		1.28	1.51	
4	26			1.63	1.83
4 1/2	34				1.95
5	45				2.68

MATERIAL SPECIFICATIONS	
<i>Barrel:</i> DOM Tubing ASTM 513/519 Gr. 1020/1026	<i>Piston Seal:</i> Polyurethane with Nitrile Loader
<i>Head:</i> Ductile Iron ASTM A536 (65-45-12)	<i>Rod seal:</i> Polyurethane
<i>Piston:</i> Ductile Iron ASTM A536 (65-45-12)	<i>Wear Ring:</i> Reinforced Nylon
<i>Rod:</i> C1045 Chrome Plated	<i>Wiper:</i> Polyurethane
<i>Accessories:</i> Steel CSA G40-21 Gr. 44W	<i>O-Ring:</i> Nitrile
	<i>Back-Up:</i> Nitrile

Seal Temperature Range: -65° F to 225° F (-54° C to 107° C)

## Series S Cylinder

### Clevis Blind End / Clevis Rod End



Bore	Rod #1	Rod #2	A	B	F	H	NPT
2	1	—	10.50	4.88	0.88	3.00	3/8
2 1/2	1	1 3/8	10.50	4.88	0.88	3.00	3/8
3	1 3/8	1 3/4	10.50	5.13	0.63	3.50	1/2
3 1/2	1 3/8	1 3/4	10.50	5.13	0.63	4.00	1/2
4	1 3/4	2	10.50	5.13	0.63	4.50	1/2
4 1/2	2	—	11.38	6.00	0.63	5.00	1/2
5	2	—	11.38	6.00	0.63	5.75	1/2